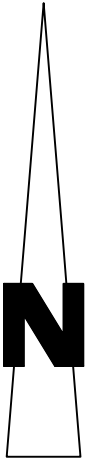
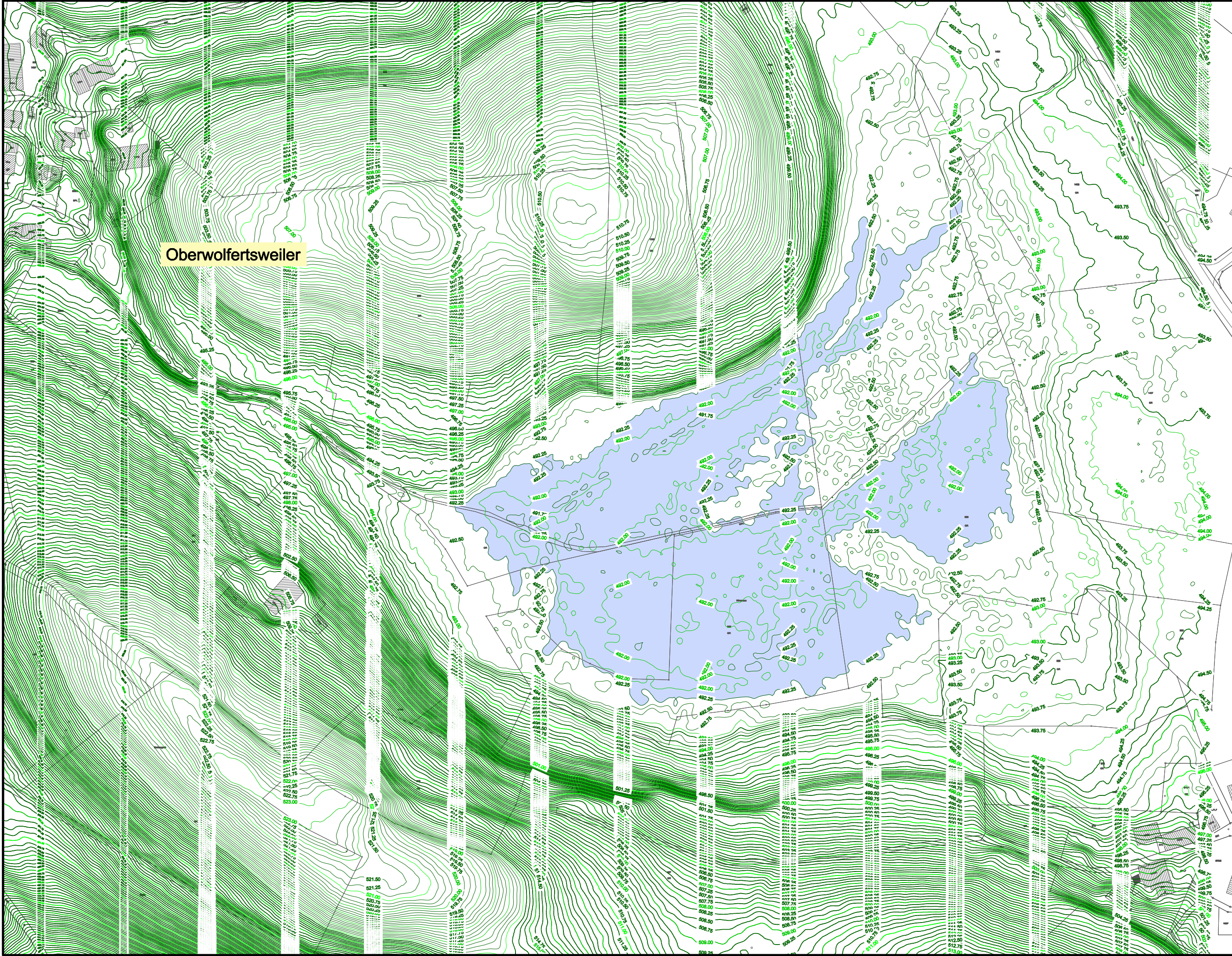


RSI RAPP + SCHMID Infrastrukturplanung GmbH, 88400 Biberach
E:\15-027-TT01_CAD\02_Entwurfsplanung\EP_EZG.dwg
Layout: LP_Götzenweiler_297

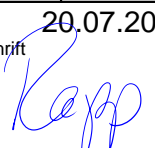


Legende:

 Staufläche 100-jährlich

Kataster: Langnau 2014

Höhen im neuen System (NN), DHHN12

<div><div><div>RSI</div><div>RAPP + SCHMID</div></div><div>Infrastrukturplanung GmbH</div><div>Rißstraße 19 88400 Biberach</div></div> <div>Tel 07351 - 577 84 90 Fax 07351 - 577 84 99</div> <div>info@rsi-bc.de www.rsi-bc.de</div>		<div><div><div><div><div></div><div>TETTANANG</div><div>hat was...</div></div></div><div>Anlage</div><div>7</div></div><div><div>Projektnummer</div><div>15-027-TT</div></div><div><div>Zeichnungsname</div><div>EP_EZG</div></div><div><div>Maßstab</div><div>1:2000</div></div><div><div>Plannummer</div><div>15-027-TT_05</div><div>Index</div></div><div><div>Bearbeiter</div><div>RA</div><div>Gezeichnet</div><div>MS</div></div><div><div>Datum</div><div>20.07.2015</div><div>Unterschrift</div><div></div></div></div>	
<div><div>Bauherr</div><div>Stadt Tett nang</div><div>Bodenseekreis</div></div>		<div><div>Bauvorhaben</div><div>Hochwasserschutz Apflau</div><div>Hydrologisches Flussgebietsmodell Wielandsbach</div></div>	
<div><div>Planart</div><div>Lageplan Rückhalteraum Götzenweiler</div><div>Bauphase</div><div>Genehmigungsplanung</div></div>		<div><div>Anerkannt, der Bauherr</div><div></div></div>	